

From www.planning.vic.gov.au at 25 September 2021 10:44 PM

PROPERTY DETAILS

Lot and Plan Number: **Lot P PS810904**

Address: **200P DONNYBROOK ROAD MICKLEHAM 3064**

Standard Parcel Identifier (SPI): **P\PS810904**

Local Government Area (Council): **HUME** www.hume.vic.gov.au

Council Property Number: **733793**

Planning Scheme: **Hume** [Planning Scheme - Hume](#)

Directory Reference: **Melway 366 K2**

UTILITIES

Rural Water Corporation: **Southern Rural Water**

Melbourne Water Retailer: **Yarra Valley Water**

Melbourne Water: **Inside drainage boundary**

Power Distributor: **JEMENA**

STATE ELECTORATES

Legislative Council: **NORTHERN METROPOLITAN**

Legislative Assembly: **YUROKE**

OTHER

Registered Aboriginal Party: **Wurundjeri Woi Wurrung Cultural
Heritage Aboriginal Corporation**

[View location in VicPlan](#)

Note

**This land is in an area added to the Urban Growth Boundary after 2005.
It may be subject to the Growth Area Infrastructure Contribution.**

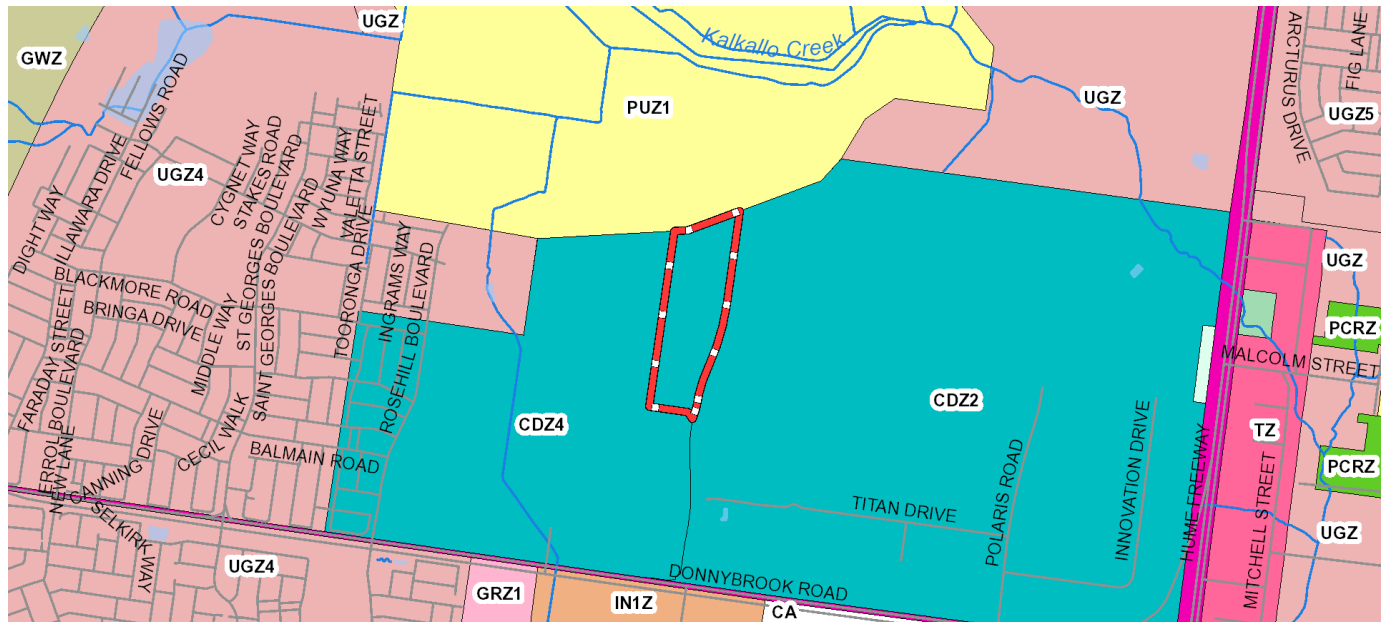
For more information about this project go to [Victorian Planning Authority](#)

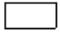

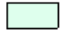





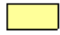
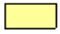



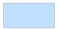

Planning Zones

[COMPREHENSIVE DEVELOPMENT ZONE \(CDZ\)](#)

[COMPREHENSIVE DEVELOPMENT ZONE - SCHEDULE 2 \(CDZ2\)](#)

[COMPREHENSIVE DEVELOPMENT ZONE - SCHEDULE 4 \(CDZ4\)](#)



	CA - Commonwealth land		CDZ - Comprehensive Development		FZ - Farming
	GRZ - General Residential		GWZ - Green Wedge		IN1Z - Industrial 1
	PCRZ - Public Conservation and Resource		PPRZ - Public Park and Recreation		PUZ1 - Public Use-Service and Utility
	PUZ5 - Public Use-Cemetery/Crematorium		RDZ1 - Road-Category 1		TZ - Township
	UGZ - Urban Growth		Water area		Water course

Note: labels for zones may appear outside the actual zone - please compare the labels with the legend.

Planning Overlay

None affecting this land - there are overlays in the vicinity

[DEVELOPMENT CONTRIBUTIONS PLAN OVERLAY \(DCPO\)](#)

[DEVELOPMENT PLAN OVERLAY \(DPO\)](#)

[HERITAGE OVERLAY \(HO\)](#)

[LAND SUBJECT TO INUNDATION OVERLAY \(LSIO\)](#)

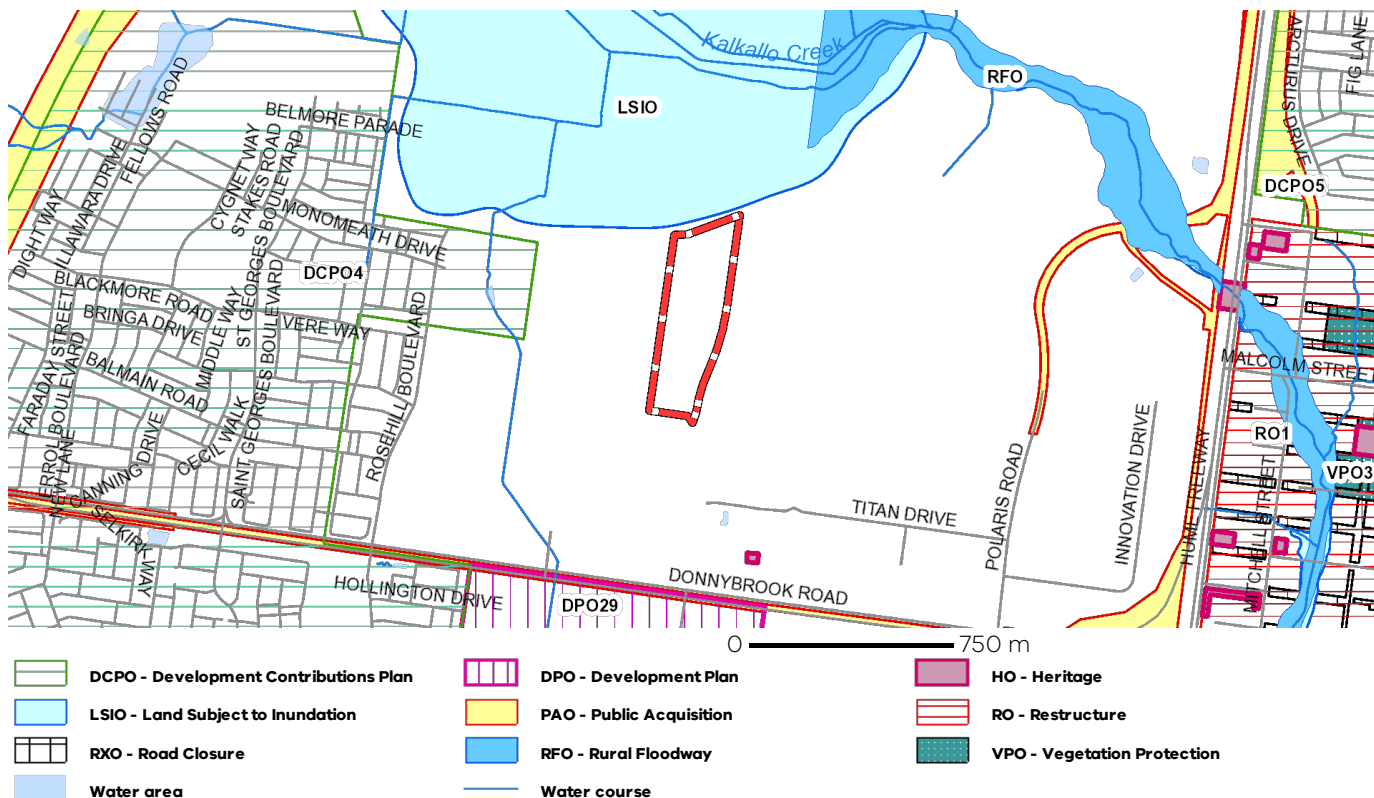
[PUBLIC ACQUISITION OVERLAY \(PAO\)](#)

[RESTRUCTURE OVERLAY \(RO\)](#)

[ROAD CLOSURE OVERLAY \(RXO\)](#)

[RURAL FLOODWAY OVERLAY \(RFO\)](#)

[VEGETATION PROTECTION OVERLAY \(VPO\)](#)



Note: due to overlaps, some overlays may not be visible, and some colours may not match those in the legend

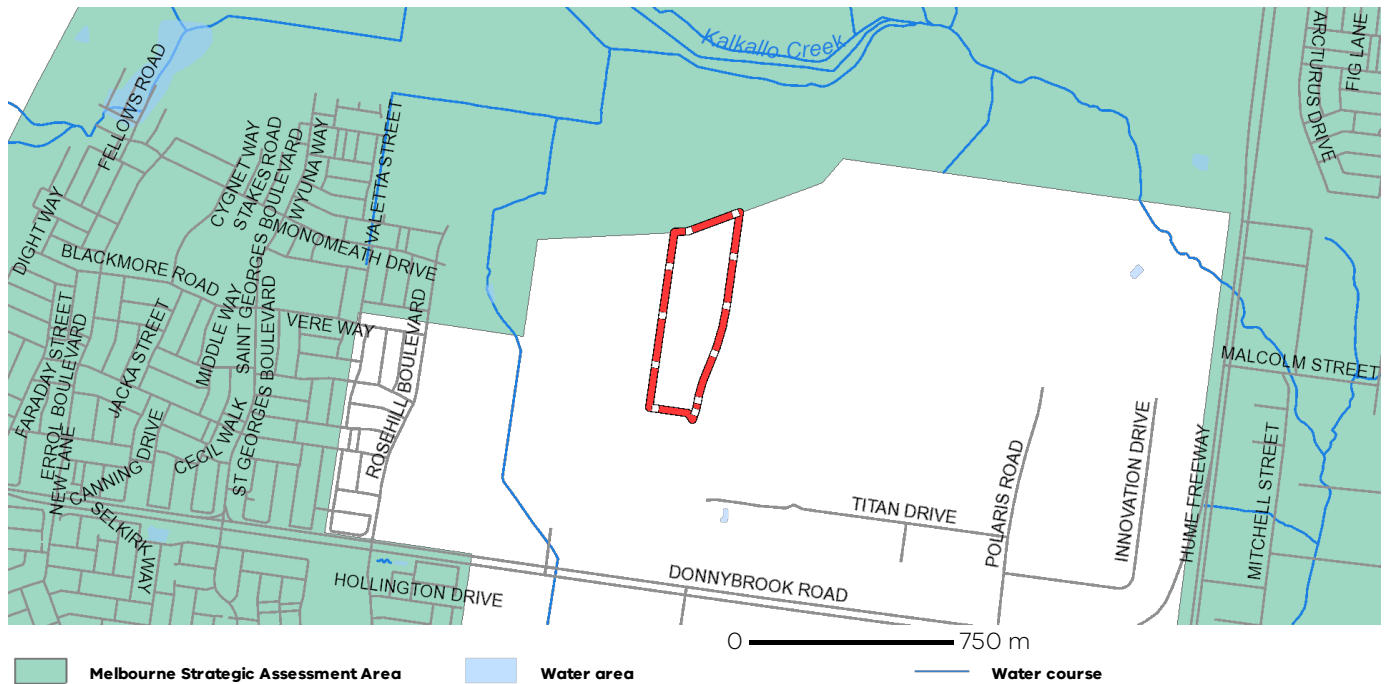
Growth Area Infrastructure Contribution

This parcel is in an area added to the Urban Growth Boundary after 2005. It may be subject to the Growth Area Infrastructure Contribution. For more information about this contribution go to [Victorian Planning Authority](http://www.vpa.vic.gov.au)



Melbourne Strategic Assessment

This parcel may be located within the Melbourne Strategic Assessment program area. Actions associated with urban development are subject to requirements of the Commonwealth Environment Protection and Biodiversity Conservation Act 1999. Follow the link for more details: <https://nvim.delwp.vic.gov.au/BCS>



Copyright © - State Government of Victoria

Disclaimer: This content is provided for information purposes only. No claim is made as to the accuracy or authenticity of the content. The Victorian Government does not accept any liability to any person for the information provided.

Read the full disclaimer at <https://www2.delwp.vic.gov.au/disclaimer>

Notwithstanding this disclaimer, a vendor may rely on the information in this report for the purpose of a statement that land is in a bushfire prone area as required by section 32C (b) of the Sale of Land 1962 (Vic).

Further Planning Information

Planning scheme data last updated on 22 September 2021.

A **planning scheme** sets out policies and requirements for the use, development and protection of land. This report provides information about the zone and overlay provisions that apply to the selected land. Information about the State and local policy, particular, general and operational provisions of the local planning scheme that may affect the use of this land can be obtained by contacting the local council or by visiting <https://www.planning.vic.gov.au>

This report is NOT a **Planning Certificate** issued pursuant to Section 199 of the **Planning and Environment Act 1987**. It does not include information about exhibited planning scheme amendments, or zonings that may affect the land. To obtain a Planning Certificate go to Titles and Property Certificates at Landata - <https://www.landata.vic.gov.au>

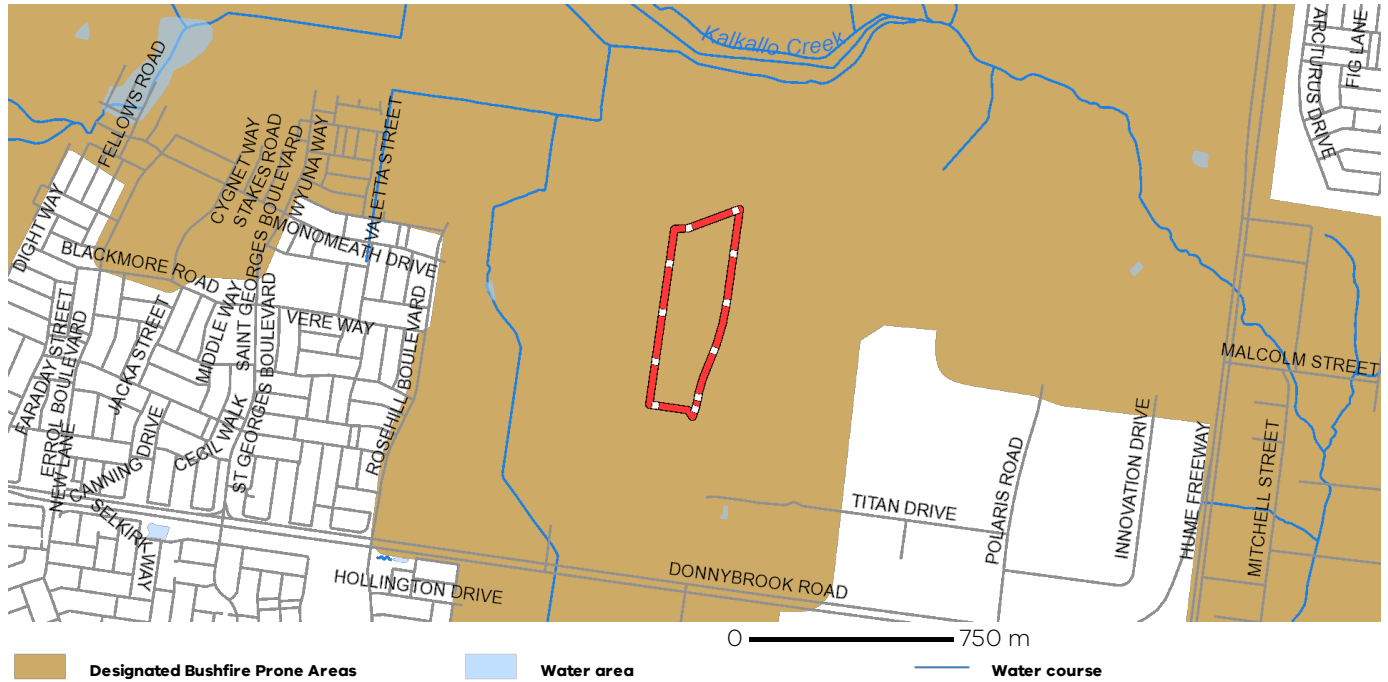
For details of surrounding properties, use this service to get the Reports for properties of interest.

To view planning zones, overlay and heritage information in an interactive format visit <https://mapshare.maps.vic.gov.au/vicplan>

For other information about planning in Victoria visit <https://www.planning.vic.gov.au>

Designated Bushfire Prone Areas

This parcel is in a designated bushfire prone area.
Special bushfire construction requirements apply. Planning provisions may apply.



Designated bushfire prone areas as determined by the Minister for Planning are in effect from 8 September 2011 and amended from time to time.

The Building Regulations 2018 through application of the Building Code of Australia, apply bushfire protection standards for building works in designated bushfire prone areas.

Designated bushfire prone areas maps can be viewed on VicPlan at <https://mapshare.maps.vic.gov.au/vicplan> or at the relevant local council.

Note: prior to 8 September 2011, the whole of Victoria was designated as bushfire prone area for the purposes of the building control system.

Further information about the building control system and building in bushfire prone areas can be found on the Victorian Building Authority website <https://www.vba.vic.gov.au>

Copies of the Building Act and Building Regulations are available from <http://www.legislation.vic.gov.au>

For Planning Scheme Provisions in bushfire areas visit <https://www.planning.vic.gov.au>