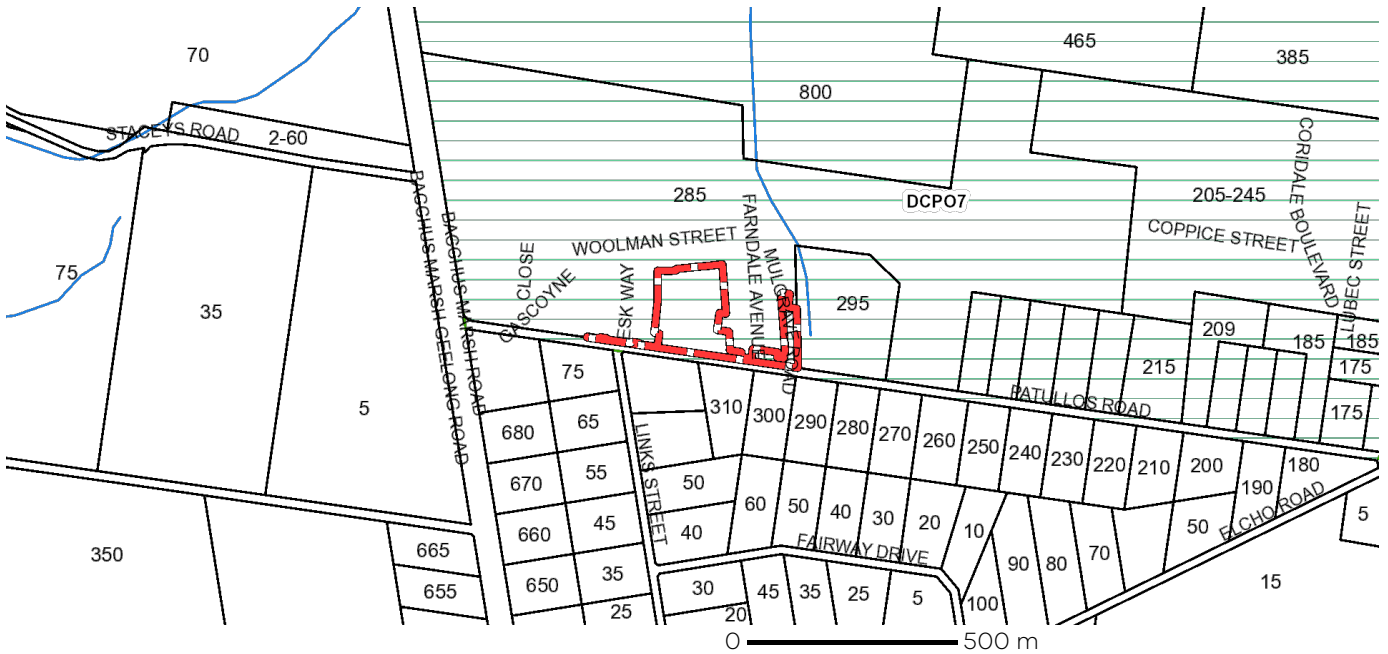


Planning Overlays

[DEVELOPMENT CONTRIBUTIONS PLAN OVERLAY \(DCPO\)](#)

[DEVELOPMENT CONTRIBUTIONS PLAN OVERLAY - SCHEDULE 7 \(DCPO7\)](#)



 DCPO - Development Contributions Plan  Water course

Note: due to overlaps, some overlays may not be visible, and some colours may not match those in the legend

OTHER OVERLAYS

Other overlays in the vicinity not directly affecting this land

[ENVIRONMENTAL SIGNIFICANCE OVERLAY \(ESO\)](#)


[HERITAGE OVERLAY \(HO\)](#)

[LAND SUBJECT TO INUNDATION OVERLAY \(LSIO\)](#)

[PUBLIC ACQUISITION OVERLAY \(PAO\)](#)

[VEGETATION PROTECTION OVERLAY \(VPO\)](#)



 ESO - Environmental Significance  HO - Heritage  LSIO - Land Subject to Inundation
 PAO - Public Acquisition  VPO - Vegetation Protection  Water course

Note: due to overlaps, some overlays may not be visible, and some colours may not match those in the legend

Copyright © - State Government of Victoria

Disclaimer: This content is provided for information purposes only. No claim is made as to the accuracy or authenticity of the content. The Victorian Government does not accept any liability to any person for the information provided.

Read the full disclaimer at <https://www2.delwp.vic.gov.au/disclaimer>

Notwithstanding this disclaimer, a vendor may rely on the information in this report for the purpose of a statement that land is in a bushfire prone area as required by section 32C (b) of the Sale of Land 1962 (Vic).

Further Planning Information

Planning scheme data last updated on 5 May 2021.

A **planning scheme** sets out policies and requirements for the use, development and protection of land. This report provides information about the zone and overlay provisions that apply to the selected land. Information about the State and local policy, particular, general and operational provisions of the local planning scheme that may affect the use of this land can be obtained by contacting the local council or by visiting <https://www.planning.vic.gov.au>

This report is NOT a **Planning Certificate** issued pursuant to Section 199 of the **Planning and Environment Act 1987**. It does not include information about exhibited planning scheme amendments, or zonings that may affect the land. To obtain a Planning Certificate go to Titles and Property Certificates at Landata - <https://www.landata.vic.gov.au>

For details of surrounding properties, use this service to get the Reports for properties of interest.

To view planning zones, overlay and heritage information in an interactive format visit <https://mapshare.maps.vic.gov.au/vicplan>

For other information about planning in Victoria visit <https://www.planning.vic.gov.au>

Native Vegetation Removal

Unless exempt, native vegetation removal from this property requires a planning permit under Clause 52.17 of the local planning scheme. For more information see [Native Vegetation \(Clause 52.17\)](#) with local variations in [Native Vegetation \(Clause 52.17\) Schedule](#)

To identify proposed native vegetation removal from this property visit the [Native Vegetation Information Management system](#).

For information on preparing a planning permit application to remove native vegetation refer to the [Applicants guide - Applications to remove, destroy or lop native vegetation](#) or contact the relevant responsible authority.

Designated Bushfire Prone Areas

This parcel is in a designated bushfire prone area.
Special bushfire construction requirements apply. Planning provisions may apply.



Designated bushfire prone areas as determined by the Minister for Planning are in effect from 8 September 2011 and amended from time to time.

The Building Regulations 2018 through application of the Building Code of Australia, apply bushfire protection standards for building works in designated bushfire prone areas.

Designated bushfire prone areas maps can be viewed on VicPlan at <https://mapshare.maps.vic.gov.au/vicplan> or at the relevant local council.

Note: prior to 8 September 2011, the whole of Victoria was designated as bushfire prone area for the purposes of the building control system.

Further information about the building control system and building in bushfire prone areas can be found on the Victorian Building Authority website <https://www.vba.vic.gov.au>

Copies of the Building Act and Building Regulations are available from <http://www.legislation.vic.gov.au>

For Planning Scheme Provisions in bushfire areas visit <https://www.planning.vic.gov.au>