

From [www.planning.vic.gov.au](http://www.planning.vic.gov.au) at 10 May 2021 12:28 PM

## PROPERTY DETAILS

Lot and Plan Number: **Lot 2 PS606631**  
 Address: **NORTHERN HIGHWAY ECHUCA 3564**  
 Standard Parcel Identifier (SPI): **2\PS606631**  
 Local Government Area (Council): **CAMPASPE**  
 Council Property Number: **30740**  
 Planning Scheme: **Campaspe**  
 Directory Reference: **Vicroads 31 D4**

[www.campaspe.vic.gov.au](http://www.campaspe.vic.gov.au)

[Planning Scheme - Campaspe](#)

## UTILITIES

Rural Water Corporation: **Goulburn-Murray Water**  
 Urban Water Corporation: **Grampians Wimmera Mallee Water**  
 Melbourne Water: **Outside drainage boundary**  
 Power Distributor: **POWERCOR**

[View location in VicPlan](#)

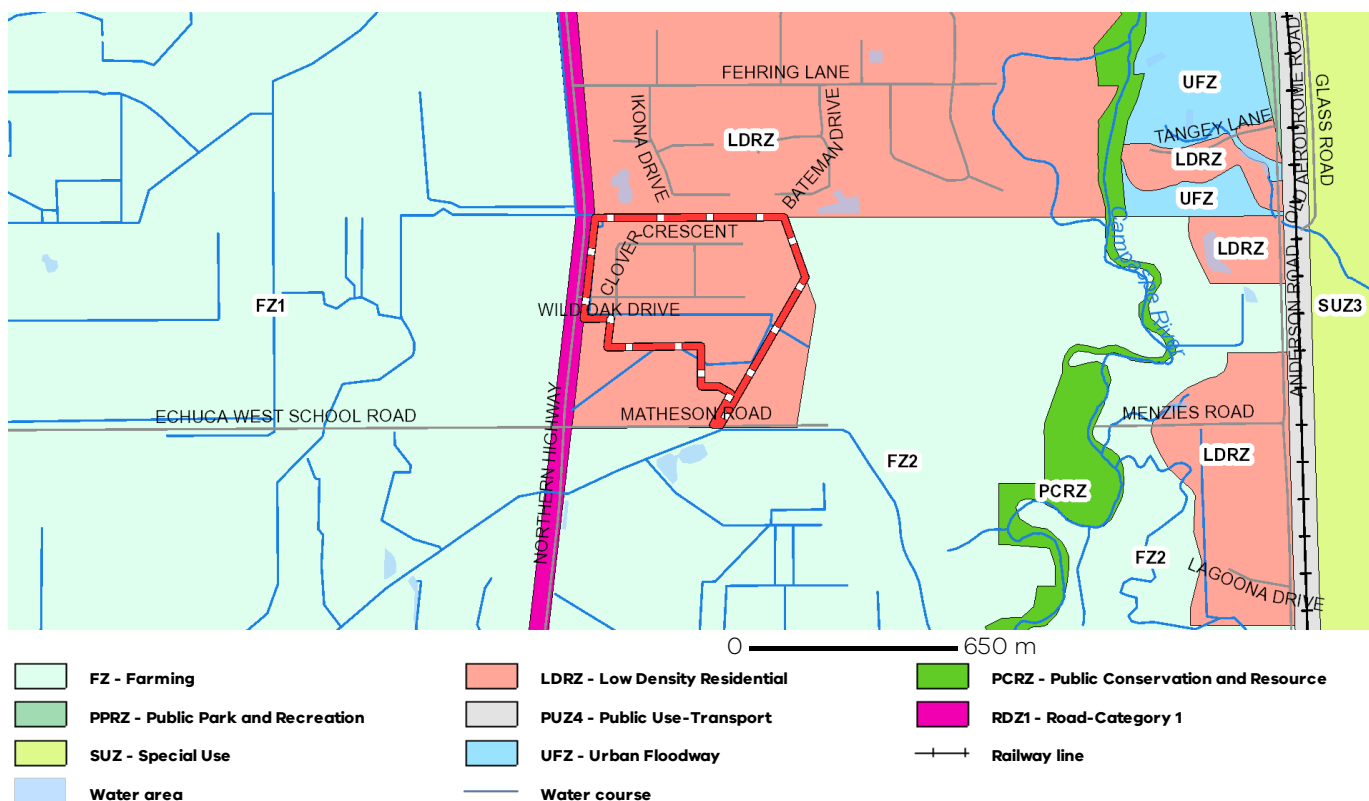
## STATE ELECTORATES

Legislative Council: **NORTHERN VICTORIA**  
 Legislative Assembly: **MURRAY PLAINS**  
 Registered Aboriginal Party: **Yorta Yorta Nation Aboriginal Corporation**

## Planning Zones

[LOW DENSITY RESIDENTIAL ZONE \(LDRZ\)](#)

[SCHEDULE TO THE LOW DENSITY RESIDENTIAL ZONE \(LDRZ\)](#)

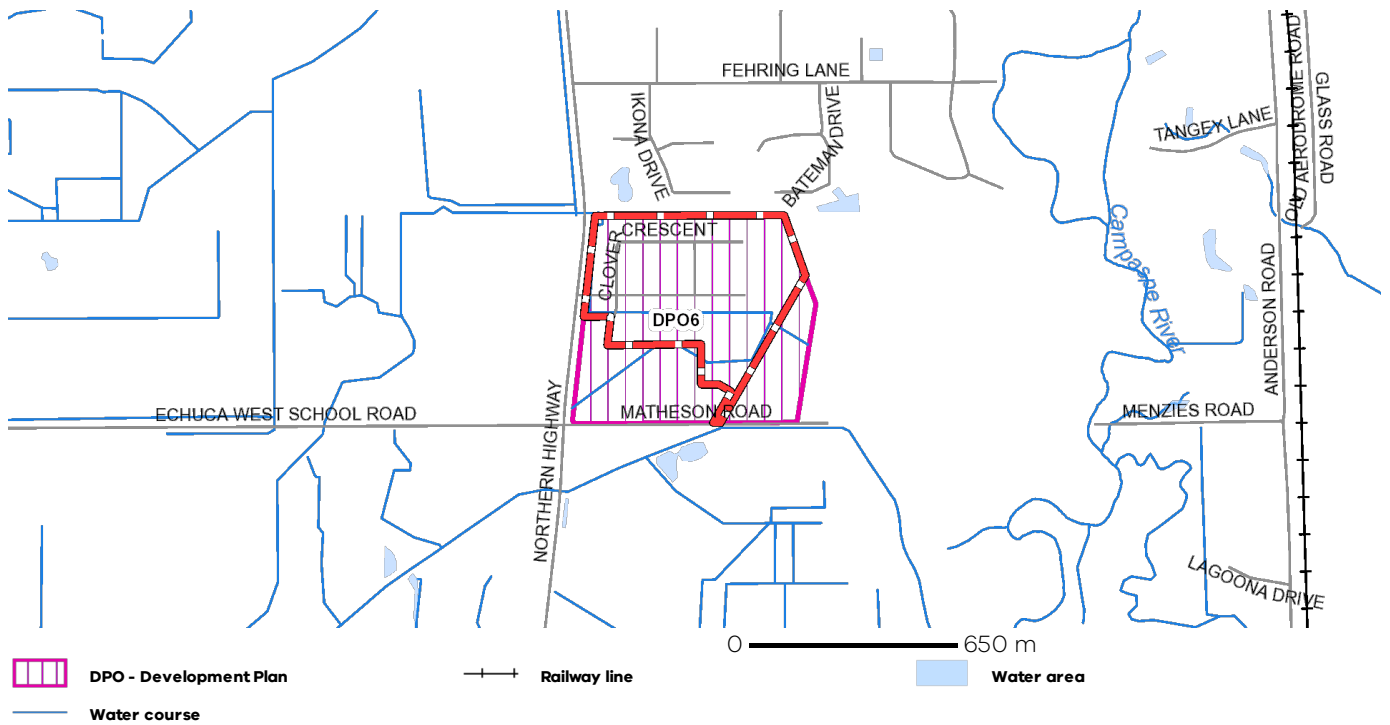


Note: labels for zones may appear outside the actual zone - please compare the labels with the legend.

## Planning Overlays

### DEVELOPMENT PLAN OVERLAY (DPO)

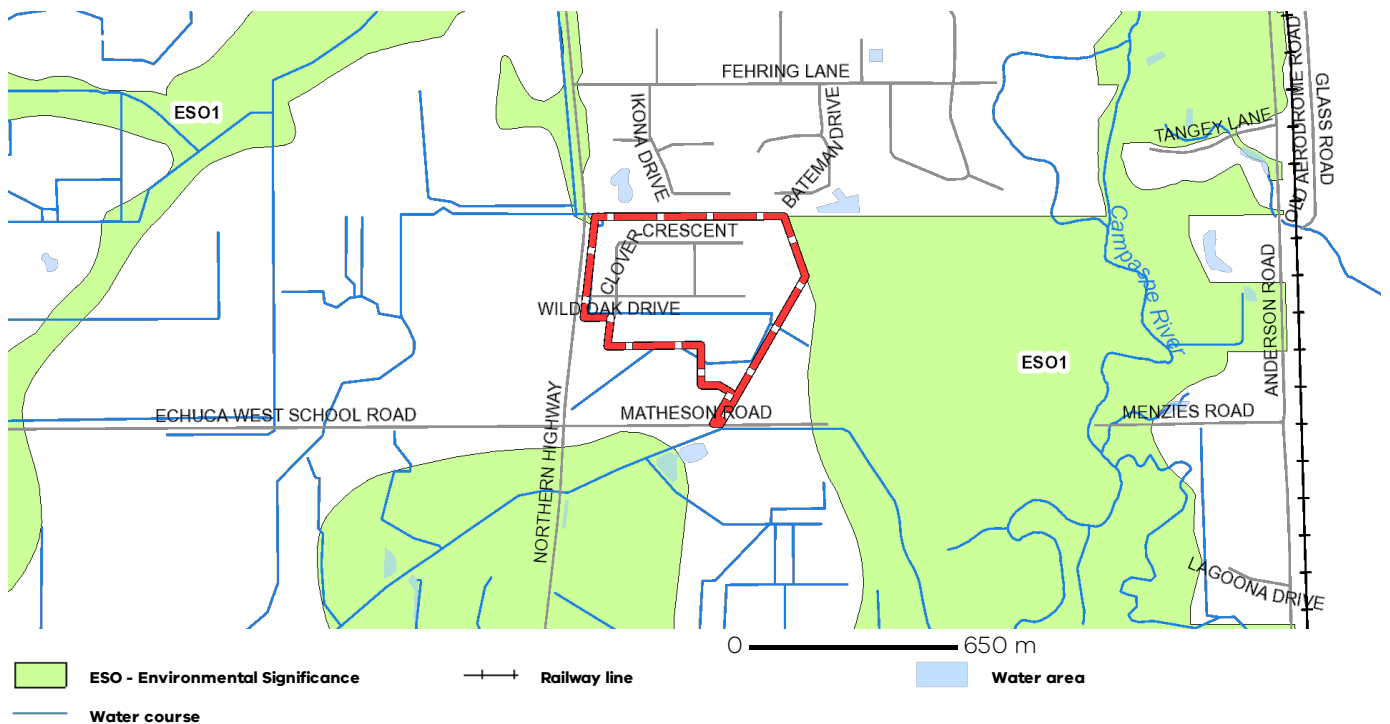
#### DEVELOPMENT PLAN OVERLAY - SCHEDULE 6 (DPO6)



Note: due to overlaps, some overlays may not be visible, and some colours may not match those in the legend

### ENVIRONMENTAL SIGNIFICANCE OVERLAY (ESO)

#### ENVIRONMENTAL SIGNIFICANCE OVERLAY - SCHEDULE 1 (ESO1)

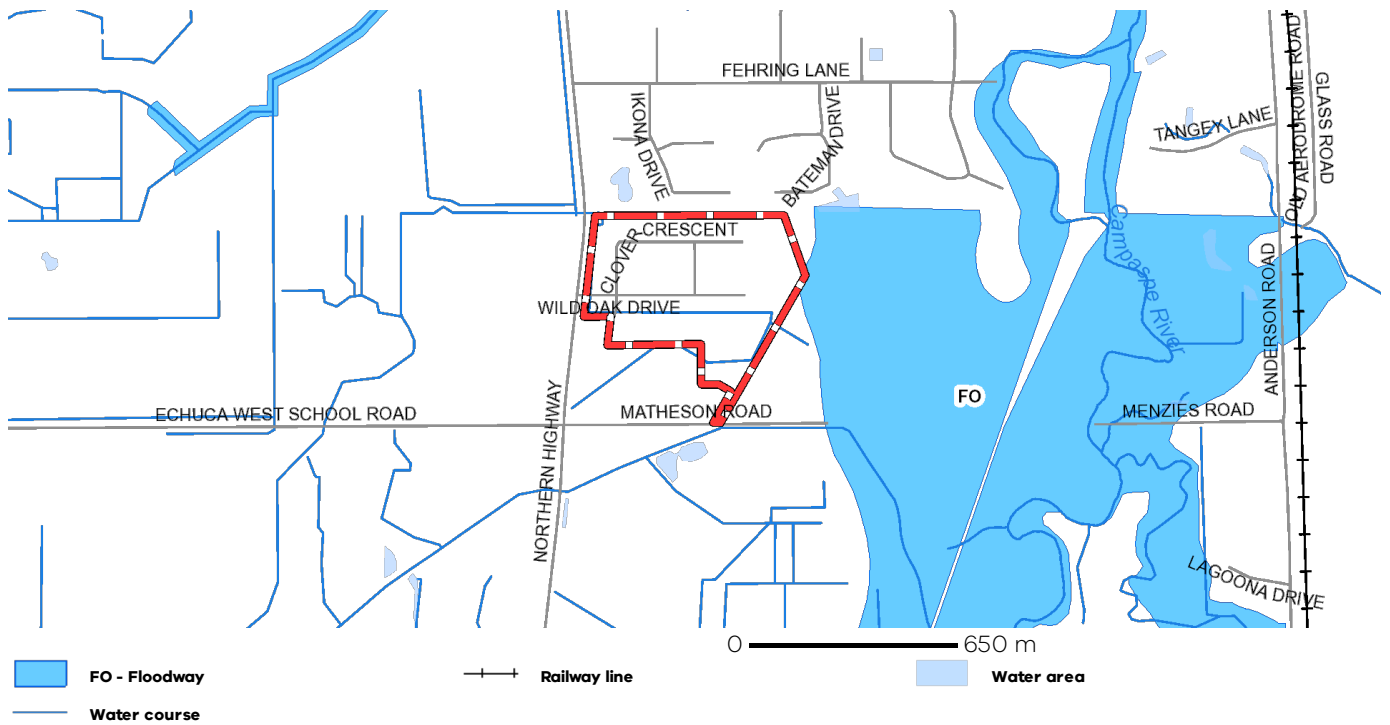


Note: due to overlaps, some overlays may not be visible, and some colours may not match those in the legend

## Planning Overlays

### FLOODWAY OVERLAY (FO)

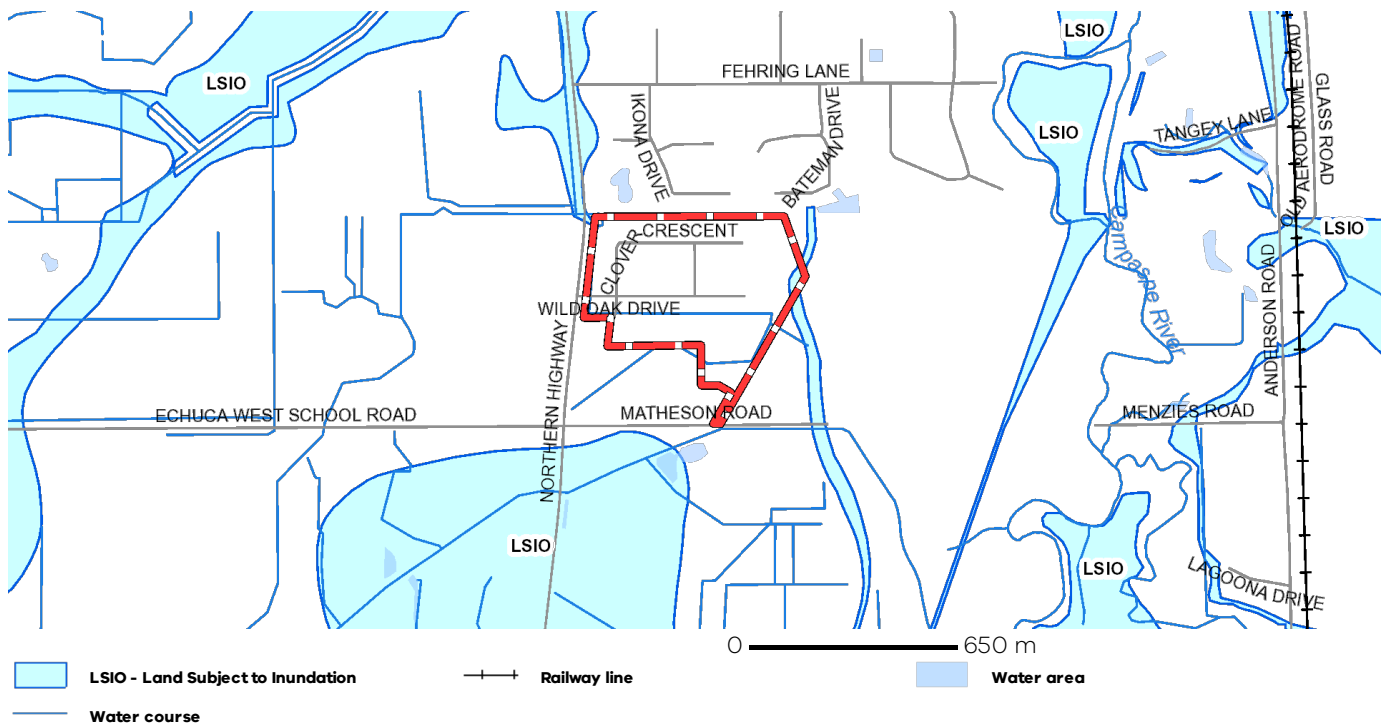
### FLOODWAY OVERLAY SCHEDULE (FO)



Note: due to overlaps, some overlays may not be visible, and some colours may not match those in the legend

### LAND SUBJECT TO INUNDATION OVERLAY (LSIO)

### LAND SUBJECT TO INUNDATION OVERLAY SCHEDULE (LSIO)

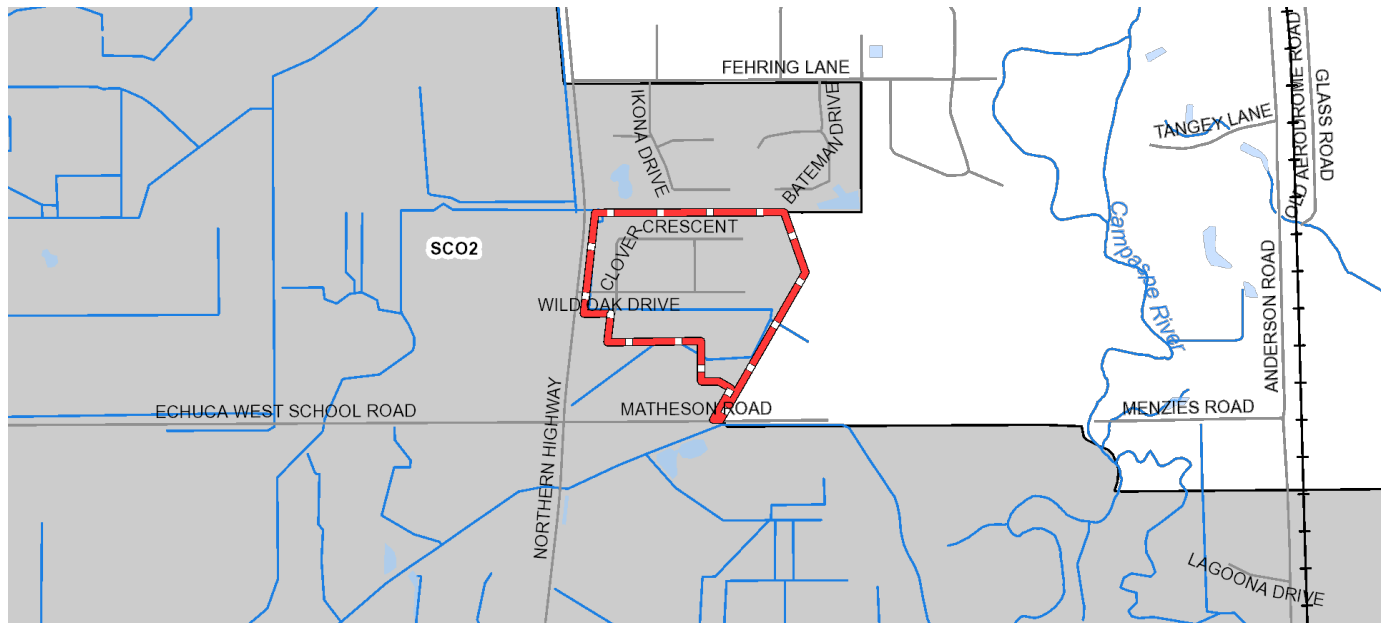


Note: due to overlaps, some overlays may not be visible, and some colours may not match those in the legend

## Planning Overlays

### SPECIFIC CONTROLS OVERLAY (SCO)

### SPECIFIC CONTROLS OVERLAY - SCHEDULE 2 (SCO2)



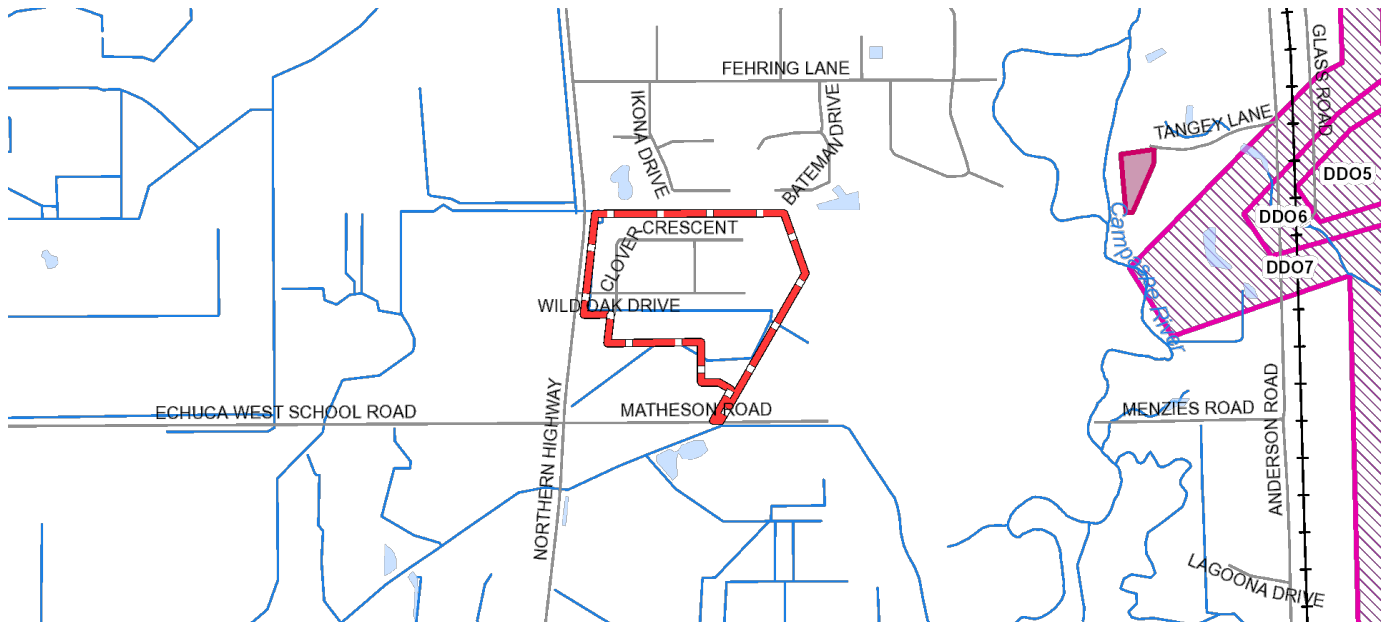
Note: due to overlaps, some overlays may not be visible, and some colours may not match those in the legend

### OTHER OVERLAYS

Other overlays in the vicinity not directly affecting this land

### DESIGN AND DEVELOPMENT OVERLAY (DDO)

### HERITAGE OVERLAY (HO)



Note: due to overlaps, some overlays may not be visible, and some colours may not match those in the legend

## Areas of Aboriginal Cultural Heritage Sensitivity

All or part of this parcel is an 'area of cultural heritage sensitivity'.

'Areas of cultural heritage sensitivity' are defined under the Aboriginal Heritage Regulations 2018, and include registered Aboriginal cultural heritage places and land form types that are generally regarded as more likely to contain Aboriginal cultural heritage.

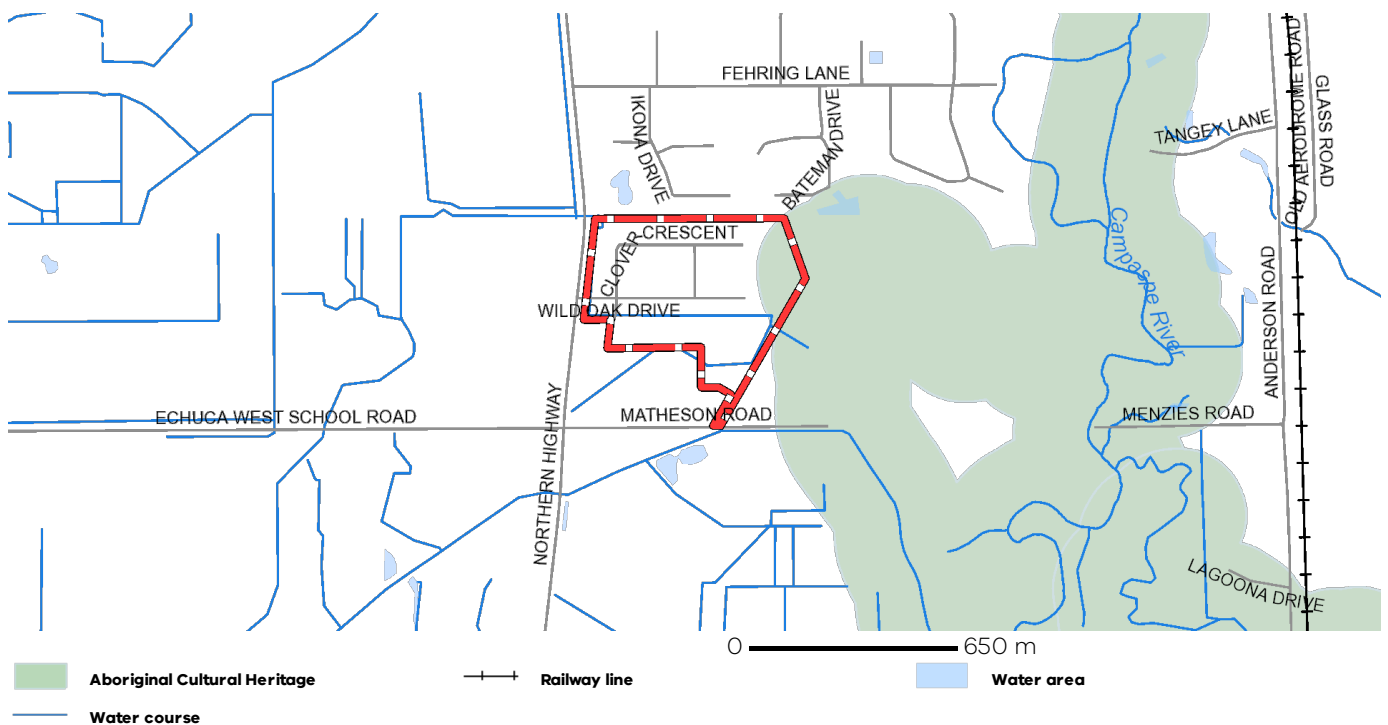
Under the Aboriginal Heritage Regulations 2018, 'areas of cultural heritage sensitivity' are one part of a two part trigger which require a 'cultural heritage management plan' be prepared where a listed 'high impact activity' is proposed.

If a significant land use change is proposed (for example, a subdivision into 3 or more lots), a cultural heritage management plan may be triggered. One or two dwellings, works ancillary to a dwelling, services to a dwelling, alteration of buildings and minor works are examples of works exempt from this requirement.

Under the Aboriginal Heritage Act 2006, where a cultural heritage management plan is required, planning permits, licences and work authorities cannot be issued unless the cultural heritage management plan has been approved for the activity.

For further information about whether a Cultural Heritage Management Plan is required go to <http://www.aav.nrms.net.au/aavQuestion1.aspx>

More information, including links to both the Aboriginal Heritage Act 2006 and the Aboriginal Heritage Regulations 2018, can also be found here - <https://www.aboriginalvictoria.vic.gov.au/aboriginal-heritage-legislation>



## Further Planning Information

Planning scheme data last updated on 5 May 2021.

A **planning scheme** sets out policies and requirements for the use, development and protection of land. This report provides information about the zone and overlay provisions that apply to the selected land. Information about the State and local policy, particular, general and operational provisions of the local planning scheme that may affect the use of this land can be obtained by contacting the local council or by visiting <https://www.planning.vic.gov.au>

This report is NOT a **Planning Certificate** issued pursuant to Section 199 of the **Planning and Environment Act 1987**. It does not include information about exhibited planning scheme amendments, or zonings that may affect the land. To obtain a Planning Certificate go to Titles and Property Certificates at Landata - <https://www.landata.vic.gov.au>

For details of surrounding properties, use this service to get the Reports for properties of interest.

To view planning zones, overlay and heritage information in an interactive format visit <https://mapshare.maps.vic.gov.au/vicplan>

For other information about planning in Victoria visit <https://www.planning.vic.gov.au>

## Native Vegetation Removal

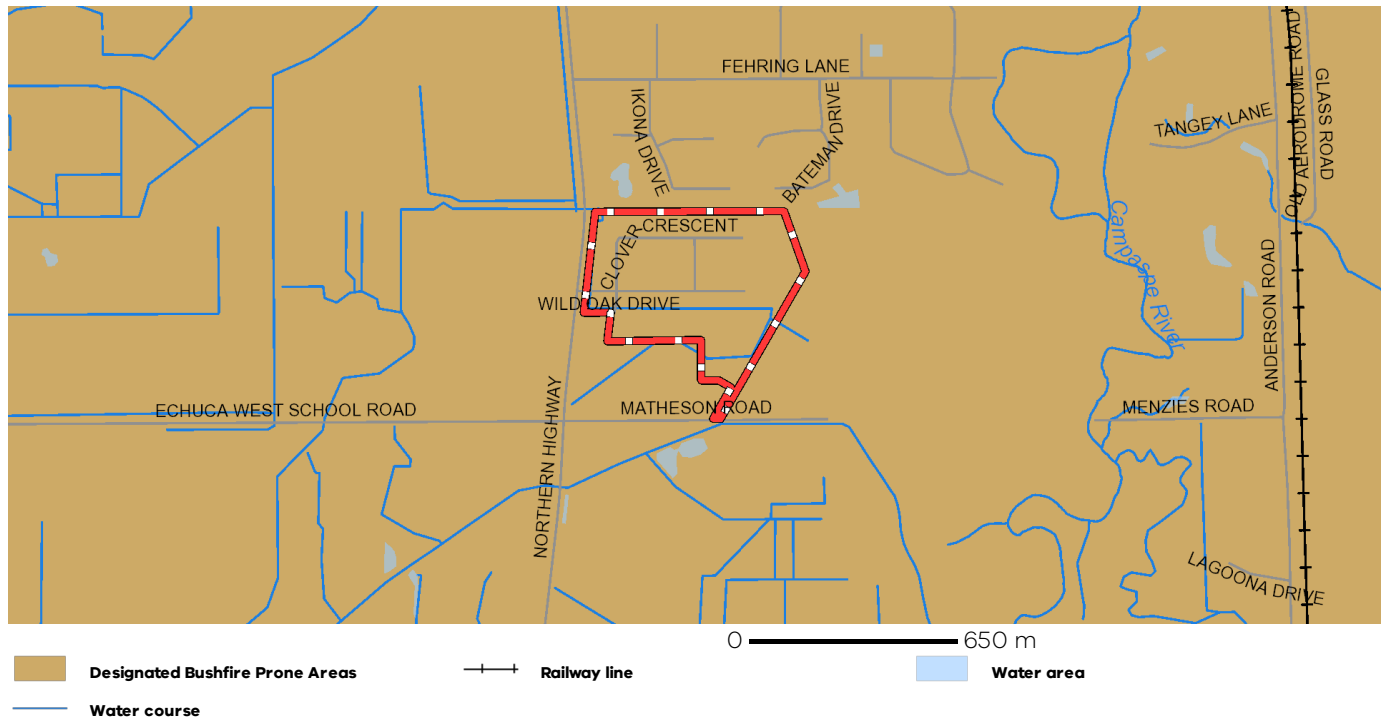
Unless exempt, native vegetation removal from this property requires a planning permit under Clause 52.17 of the local planning scheme. For more information see [Native Vegetation \(Clause 52.17\)](#) with local variations in [Native Vegetation \(Clause 52.17\) Schedule](#)

To identify proposed native vegetation removal from this property visit the [Native Vegetation Information Management system](#).

For information on preparing a planning permit application to remove native vegetation refer to the [Applicants guide - Applications to remove, destroy or lop native vegetation](#) or contact the relevant responsible authority.

## Designated Bushfire Prone Areas

**This parcel is in a designated bushfire prone area.**  
**Special bushfire construction requirements apply. Planning provisions may apply.**



Designated bushfire prone areas as determined by the Minister for Planning are in effect from 8 September 2011 and amended from time to time.

The Building Regulations 2018 through application of the Building Code of Australia, apply bushfire protection standards for building works in designated bushfire prone areas.

Designated bushfire prone areas maps can be viewed on VicPlan at <https://mapshare.maps.vic.gov.au/vicplan> or at the relevant local council.

Note: prior to 8 September 2011, the whole of Victoria was designated as bushfire prone area for the purposes of the building control system.

Further information about the building control system and building in bushfire prone areas can be found on the Victorian Building Authority website <https://www.vba.vic.gov.au>

Copies of the Building Act and Building Regulations are available from <http://www.legislation.vic.gov.au>

For Planning Scheme Provisions in bushfire areas visit <https://www.planning.vic.gov.au>