

From [www.planning.vic.gov.au](http://www.planning.vic.gov.au) at 01 December 2020 03:46 PM

## PROPERTY DETAILS

Lot and Plan Number: **Lot 1 LP146402**  
Address: **152 ARMY ROAD PAKENHAM 3810**  
Standard Parcel Identifier (SPI): **1\LP146402**  
Local Government Area (Council): **CARDINIA**  
Council Property Number: **1039651800**  
Planning Scheme: **Cardinia**  
Directory Reference: **Melway 317 H2**

[www.cardinia.vic.gov.au](http://www.cardinia.vic.gov.au)

[Planning Scheme - Cardinia](#)

## UTILITIES

Rural Water Corporation: **Southern Rural Water**  
Melbourne Water Retailer: **South East Water**  
Melbourne Water: **Inside drainage boundary**  
Power Distributor: **AUSNET**

[View location in VicPlan](#)

## STATE ELECTORATES

Legislative Council: **EASTERN VICTORIA**  
Legislative Assembly: **GEMBROOK**

## Planning Zones

[GENERAL RESIDENTIAL ZONE \(GRZ\)](#)

[GENERAL RESIDENTIAL ZONE - SCHEDULE 1 \(GRZ1\)](#)



Note: labels for zones may appear outside the actual zone - please compare the labels with the legend.

## Planning Overlays

DEVELOPMENT CONTRIBUTIONS PLAN OVERLAY (DCPO)  
DEVELOPMENT CONTRIBUTIONS PLAN OVERLAY - SCHEDULE 1 (DCPO1)

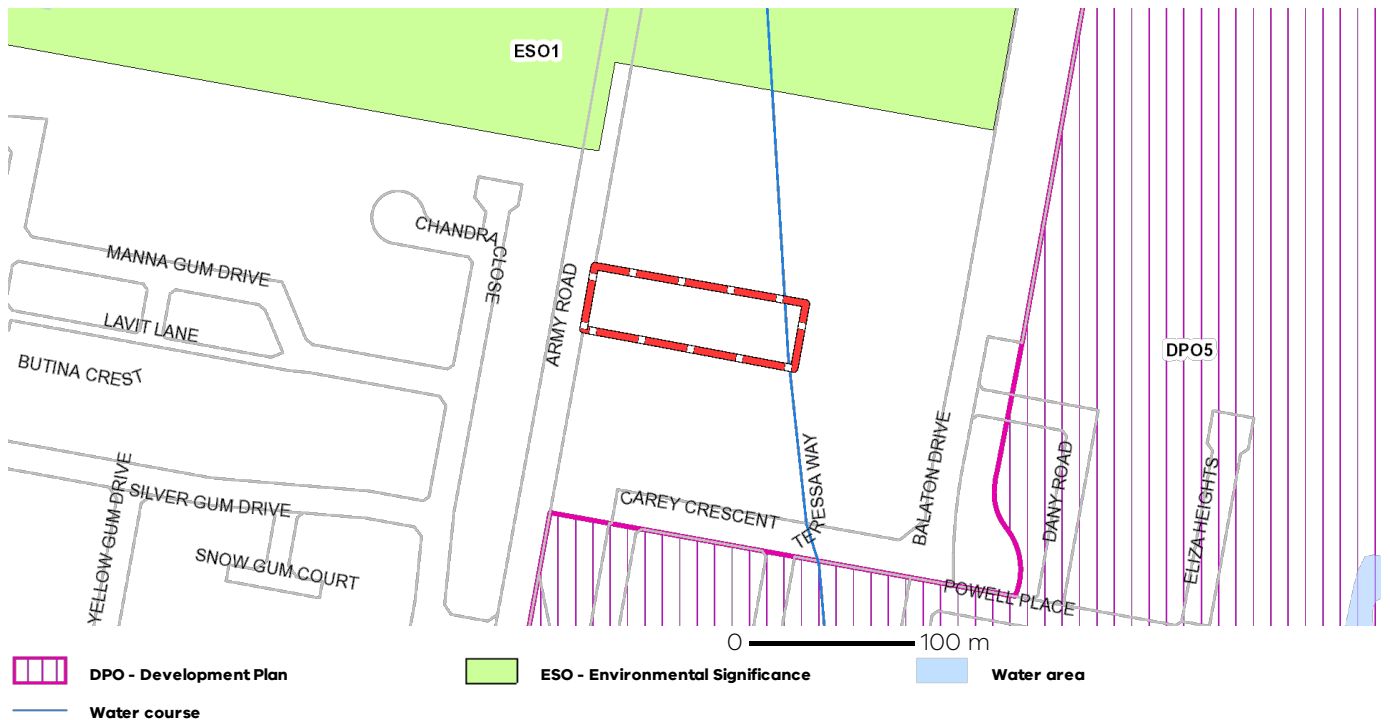


Note: due to overlaps, some overlays may not be visible, and some colours may not match those in the legend

### OTHER OVERLAYS

Other overlays in the vicinity not directly affecting this land

DEVELOPMENT PLAN OVERLAY (DPO)  
ENVIRONMENTAL SIGNIFICANCE OVERLAY (ESO)



Note: due to overlaps, some overlays may not be visible, and some colours may not match those in the legend

## Further Planning Information

Planning scheme data last updated on 26 November 2020.

A **planning scheme** sets out policies and requirements for the use, development and protection of land. This report provides information about the zone and overlay provisions that apply to the selected land. Information about the State and local policy, particular, general and operational provisions of the local planning scheme that may affect the use of this land can be obtained by contacting the local council or by visiting <https://www.planning.vic.gov.au>

This report is NOT a **Planning Certificate** issued pursuant to Section 199 of the **Planning and Environment Act 1987**. It does not include information about exhibited planning scheme amendments, or zonings that may affect the land. To obtain a Planning Certificate go to Titles and Property Certificates at Landata - <https://www.landata.vic.gov.au>

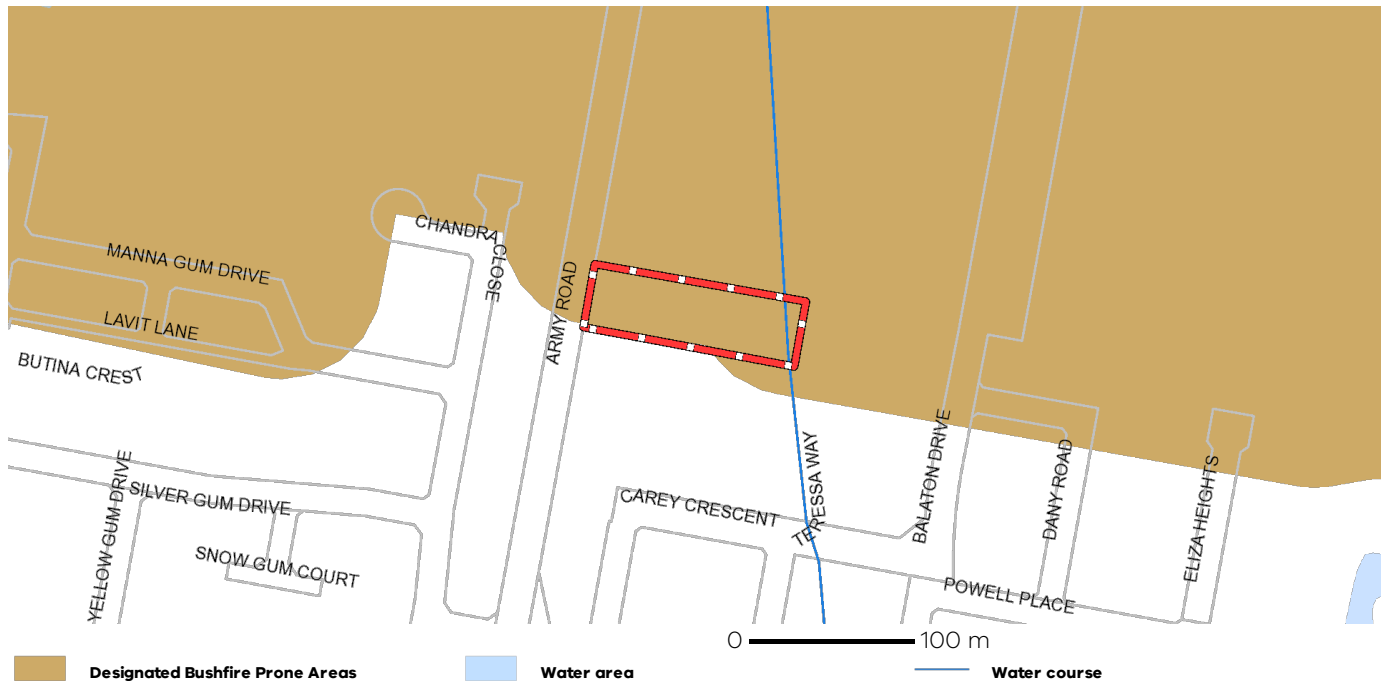
For details of surrounding properties, use this service to get the Reports for properties of interest.

To view planning zones, overlay and heritage information in an interactive format visit <https://mapshare.maps.vic.gov.au/vicplan>

For other information about planning in Victoria visit <https://www.planning.vic.gov.au>

## Designated Bushfire Prone Areas

**This parcel is in a designated bushfire prone area.**  
**Special bushfire construction requirements apply. Planning provisions may apply.**



Designated bushfire prone areas as determined by the Minister for Planning are in effect from 8 September 2011 and amended from time to time.

The Building Regulations 2018 through application of the Building Code of Australia, apply bushfire protection standards for building works in designated bushfire prone areas.

Designated bushfire prone areas maps can be viewed on VicPlan at <https://mapshare.maps.vic.gov.au/vicplan> or at the relevant local council.

Note: prior to 8 September 2011, the whole of Victoria was designated as bushfire prone area for the purposes of the building control system.

Further information about the building control system and building in bushfire prone areas can be found on the Victorian Building Authority website <https://www.vba.vic.gov.au>

Copies of the Building Act and Building Regulations are available from <http://www.legislation.vic.gov.au>

For Planning Scheme Provisions in bushfire areas visit <https://www.planning.vic.gov.au>