

From www.planning.vic.gov.au at 17 October 2021 04:51 PM

PROPERTY DETAILS

Address: **115 BAYVIEW ROAD OFFICER 3809**
 Lot and Plan Number: **Lot 2 PS343758**
 Standard Parcel Identifier (SPI): **2\PS343758**
 Local Government Area (Council): **CARDINIA**
 Council Property Number: **1074700740**
 Planning Scheme: **Cardinia**
 Directory Reference: **Melway 212 H12**

www.cardinia.vic.gov.au

[Planning Scheme - Cardinia](#)

UTILITIES

Rural Water Corporation: **Southern Rural Water**
 Melbourne Water Retailer: **South East Water**
 Melbourne Water: **Inside drainage boundary**
 Power Distributor: **AUSNET**

STATE ELECTORATES

Legislative Council: **EASTERN VICTORIA**
 Legislative Assembly: **GEMBROOK**

OTHER

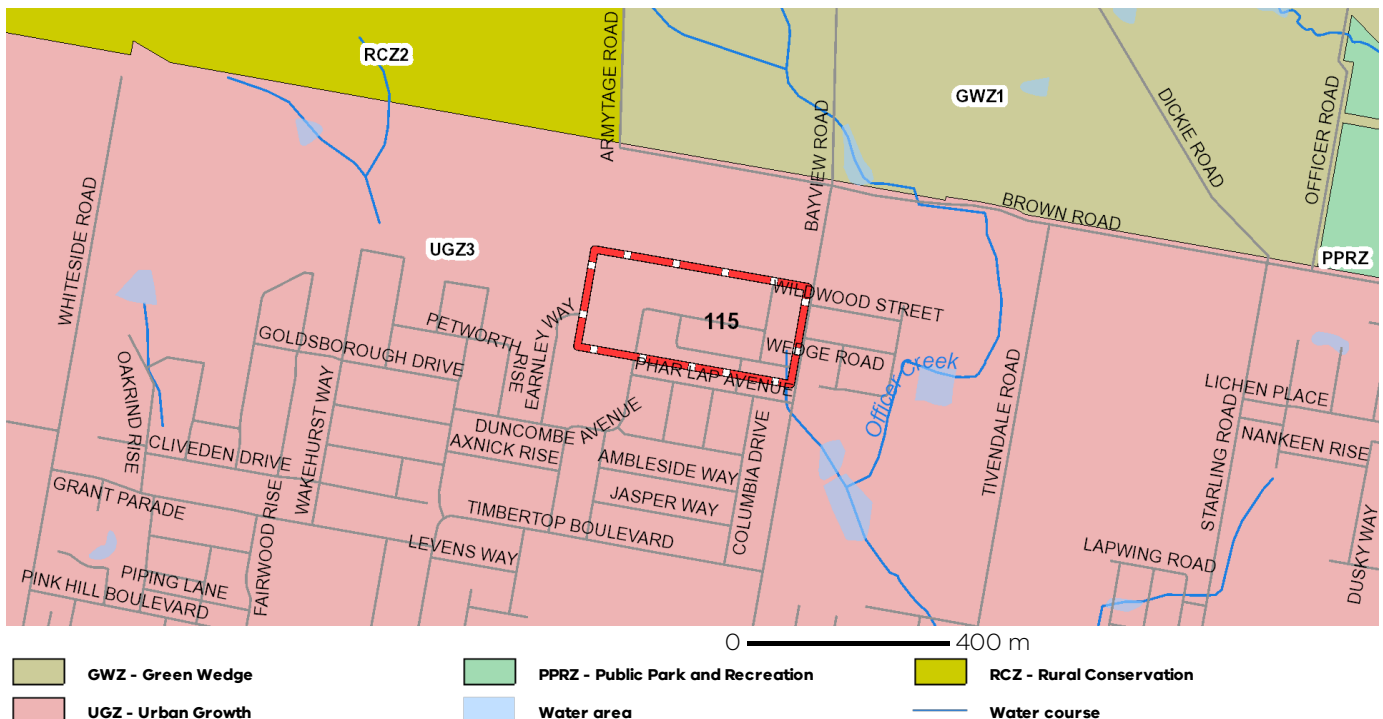
Registered Aboriginal Party: **Bunurong Land Council
Aboriginal Corporation**

[View location in VicPlan](#)

Planning Zones

[URBAN GROWTH ZONE \(UGZ\)](#)

[URBAN GROWTH ZONE - SCHEDULE 3 \(UGZ3\)](#)

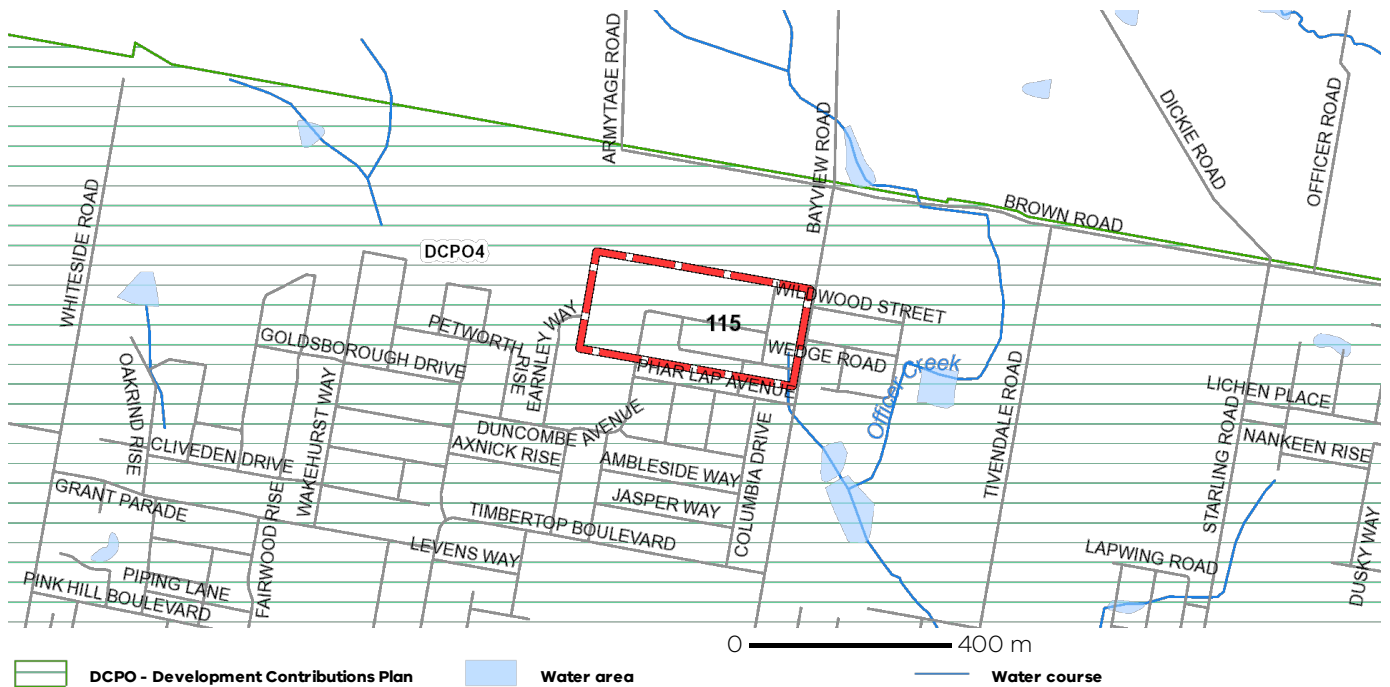


Note: labels for zones may appear outside the actual zone - please compare the labels with the legend.

Planning Overlays

[DEVELOPMENT CONTRIBUTIONS PLAN OVERLAY \(DCPO\)](#)

[DEVELOPMENT CONTRIBUTIONS PLAN OVERLAY - SCHEDULE 4 \(DCPO4\)](#)



Note: due to overlaps, some overlays may not be visible, and some colours may not match those in the legend

PLANNING PROPERTY REPORT

OTHER OVERLAYS

Other overlays in the vicinity not directly affecting this land

[BUSHFIRE MANAGEMENT OVERLAY \(BMO\)](#)

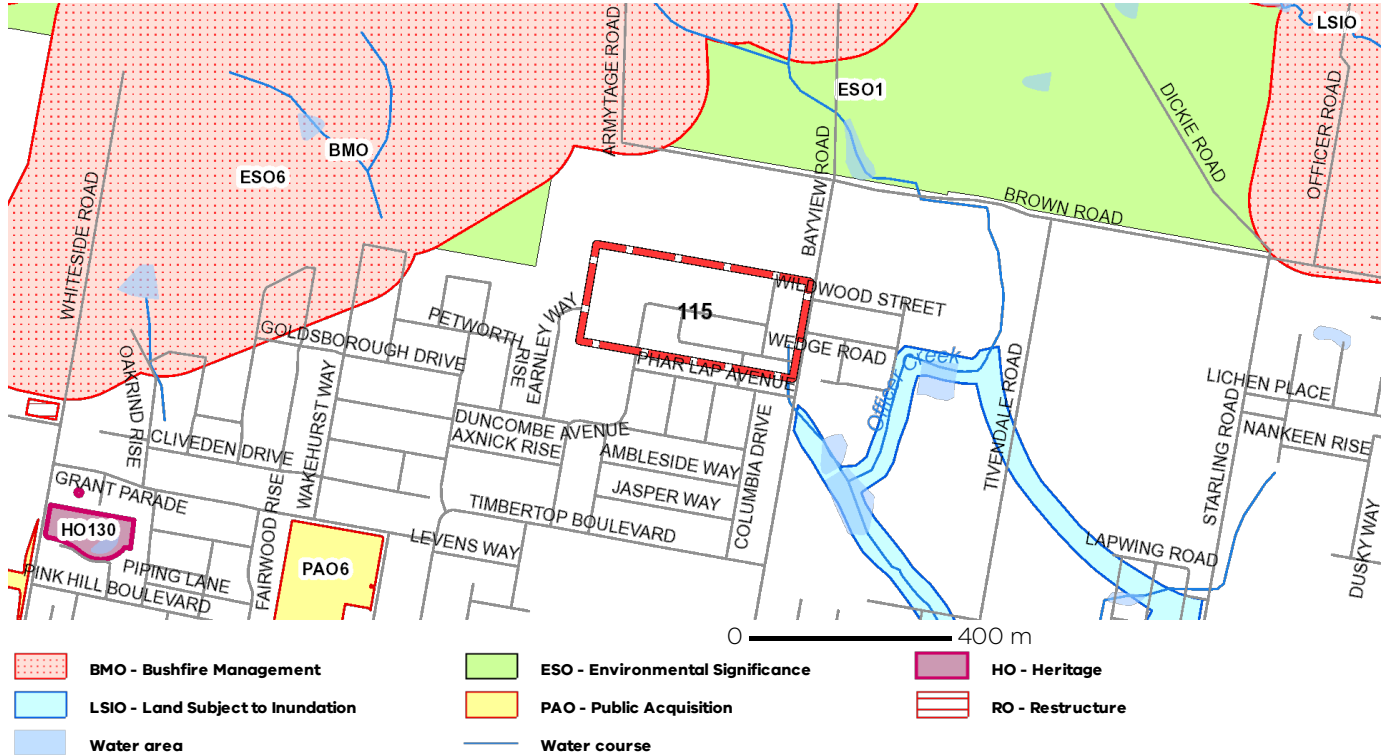
[ENVIRONMENTAL SIGNIFICANCE OVERLAY \(ESO\)](#)

[HERITAGE OVERLAY \(HO\)](#)

[LAND SUBJECT TO INUNDATION OVERLAY \(LSIO\)](#)

[PUBLIC ACQUISITION OVERLAY \(PAO\)](#)

[RESTRUCTURE OVERLAY \(RO\)](#)



Note: due to overlaps, some overlays may not be visible, and some colours may not match those in the legend

Melbourne Strategic Assessment

This property may be located within the Melbourne Strategic Assessment program area. Actions associated with urban development are subject to requirements of the Commonwealth Environment Protection and Biodiversity Conservation Act 1999. Follow the link for more details: <https://nvim.delwp.vic.gov.au/BCS>



Further Planning Information

Planning scheme data last updated on 5 October 2021.

A **planning scheme** sets out policies and requirements for the use, development and protection of land. This report provides information about the zone and overlay provisions that apply to the selected land. Information about the State and local policy, particular, general and operational provisions of the local planning scheme that may affect the use of this land can be obtained by contacting the local council or by visiting <https://www.planning.vic.gov.au>

This report is NOT a **Planning Certificate** issued pursuant to Section 199 of the **Planning and Environment Act 1987**. It does not include information about exhibited planning scheme amendments, or zonings that may affect the land. To obtain a Planning Certificate go to Titles and Property Certificates at Landata - <https://www.landata.vic.gov.au>

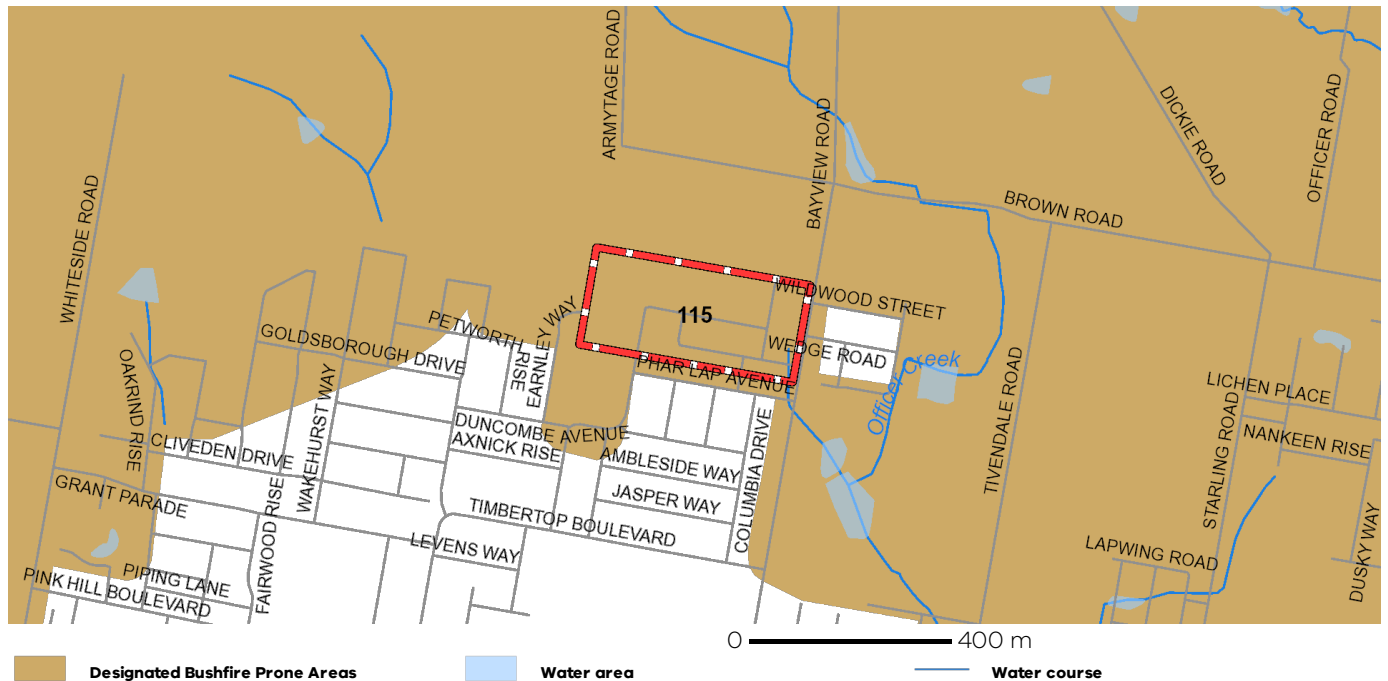
For details of surrounding properties, use this service to get the Reports for properties of interest.

To view planning zones, overlay and heritage information in an interactive format visit <https://mapshare.maps.vic.gov.au/vicplan>

For other information about planning in Victoria visit <https://www.planning.vic.gov.au>

Designated Bushfire Prone Areas

This property is in a designated bushfire prone area.
Special bushfire construction requirements apply. Planning provisions may apply.



Designated bushfire prone areas as determined by the Minister for Planning are in effect from 8 September 2011 and amended from time to time.

The Building Regulations 2018 through application of the Building Code of Australia, apply bushfire protection standards for building works in designated bushfire prone areas.

Designated bushfire prone areas maps can be viewed on VicPlan at <https://mapshare.maps.vic.gov.au/vicplan> or at the relevant local council.

Note: prior to 8 September 2011, the whole of Victoria was designated as bushfire prone area for the purposes of the building control system.

Further information about the building control system and building in bushfire prone areas can be found on the Victorian Building Authority website <https://www.vba.vic.gov.au>

Copies of the Building Act and Building Regulations are available from <http://www.legislation.vic.gov.au>

For Planning Scheme Provisions in bushfire areas visit <https://www.planning.vic.gov.au>